

DU Container

40 l - 360 l, 660 l - 1.1 m³

Self-centering Diamond lift bin Rapid, secure and convenient

- Front apron for the Diamond lifting device
- One piece handle
- Low-noise filling and discharging
- Easy to clean



DU Container

40 l - 360 l, 660 l - 1.1 m³

The system of the Diamond bins offers numerous advantages for the discharge of 2-wheel and 4-wheel containers. The so-called DU system is a modern, efficient and secure method of waste and valuable-material collection. A significant advantage is the cost-effectiveness.

This is because, with this system, collection is possible in easy one-man operation. In addition, a lot of time spent in aligning the container can be dispensed with, because the side tolerance with DU reception is far greater than with other systems.

Furthermore, the DU system offers a large plus as regards safety. Completely secure container seating through large-area latching. The Diamond guarantees secure self-centering.

Features of the 2-wheel Diamond bins, with 40 l to 360 l volume, are, among other things, the one piece handle, a low-noise filling and discharge, as well as smooth interior wall surfaces which can be easily cleaned. Numerous variants are available, including special lids, container identification by silk-screen or hot printing.

The DU system is of course also usable for 4-wheel container sizes, from a volume from 660 l to 1.1 m³



DU at the rear end loader



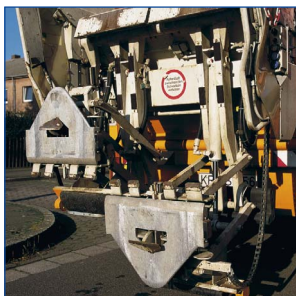
DU at the M.S.T.S. Packer



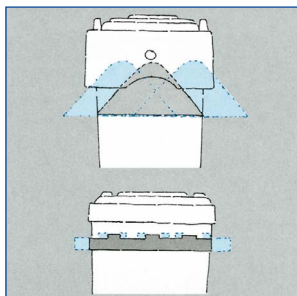
DU at the side loader



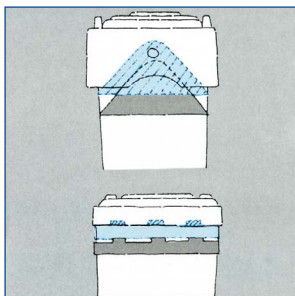
One-man operation



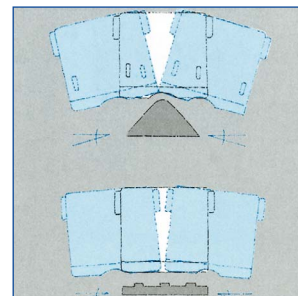
Combined MGB /
DU discharge



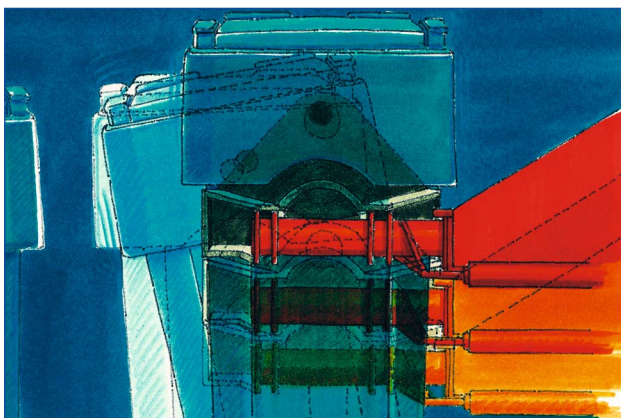
DU self-centering



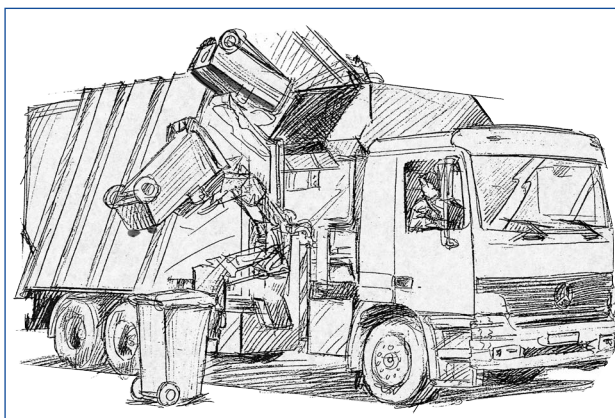
Convenient



Reliable



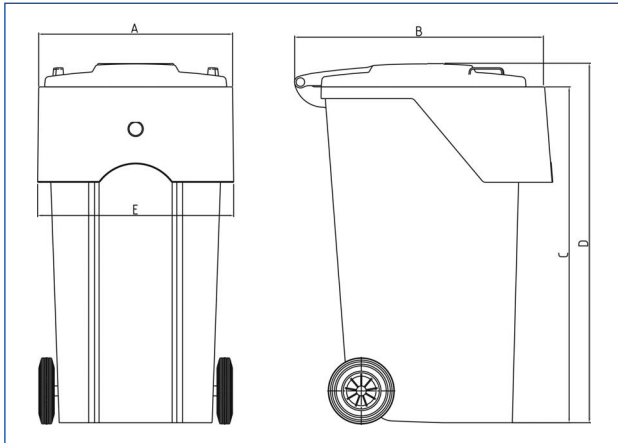
Secure self-centering of the container



Discharge in one-man reception

DU Container

40 l - 360 l, 660 l - 1.1 m³



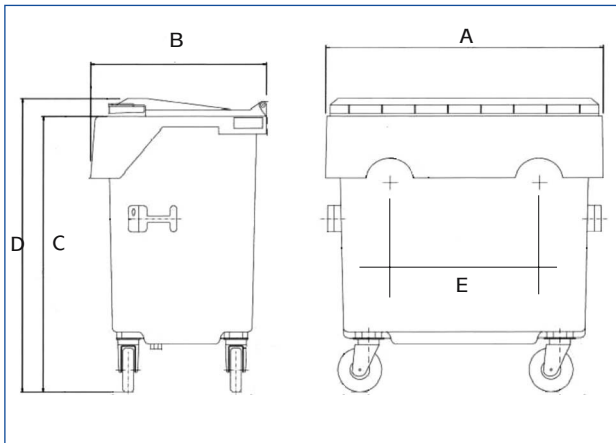
For dimensions, see table



DU two-wheeled containers 40l, 60l, 80l, 120l, 240l, 360l									
Description ¹									
Container corresponds to:	RAL-GZ951/1, Directive 2000/14/EG, DIN 30760				Prepared for transponder:		✓		
Travelling gear:	Wheel Ø 200 mm (DU360: 250 mm), rubber-tired wheels, solid wheel axle from tempered, galvanized steel				Marking possibility:		On the lid, on the body		
Receiver:	Diamond receiver				Extra equipment/ Accessories ² :		Glass slot, paper slot with cover, security paper slot, automatic lock, reflectors		
Technical Data ¹									
Type	Content l	Dimension (mm)					Useful load (kg)	Material Body/Lid	Available colours (similar RAL) ³
	I	A	B	C	D	E			
DU 40 Plastic	40	493	290		486		16	HDPE / HDPE UV-resistant, cadmium-free	Grey (7016), green, brown (8014), blue (5002), yellow (1018), red (2002)
DU 60 Plastic	60	480 ±5	610 max.	860 +45 -15	952 max.	500 max.	40	HDPE / HDPE UV-resistant, cadmium-free	Grey (7016), green, brown (8014), blue (5002), yellow (1018), red (2002)
DU 80 Plastic	80	480 ±5	610 max.	860 +45 -15	952 max.	500 max.	40	HDPE / HDPE UV-resistant, cadmium-free	Grey (7016), green, brown (8014), blue (5002), yellow (1018), red (2002)
DU 120 Plastic	120	480 ±5	610 max.	860 +45 -15	952 max.	500 max.	48	HDPE / HDPE UV-resistant, cadmium-free	Grey (7016), green, brown (8014), blue (5002), yellow (1018), red (2002)
DU 240 Plastic	240	575 ±5	795 max.	995 ±15	1085 max.	585 max.	96	HDPE / HDPE UV-resistant, cadmium-free	Grey (7016), green, brown (8014), blue (5002), yellow (1018), red (2002)
DU 360 Plastic	360	625 +10 -5	955 max.	1000 ±15	1096 max.	660 max.	144	HDPE / HDPE UV-resistant, cadmium-free	Grey (7016), green, brown (8014), blue (5002), yellow (1018), red (2002)
¹ In case of all specifications, characteristic properties and/or standard values are involved. Visuals or technical changes and/or kept improvements we us before.									
² Extra equipment, accessories, as well as other colors are available at extra cost and on request.									

DU Container

40 l - 360 l, 660 l - 1.1 m³



For dimensions, see table



DU 660

DU 770

DU 1,1

DU 770 / 1,1
Sheet metal

DU four-wheeled containers 660l, 770l, 1100l

Description¹

Container corresponds to:	RAL-GZ951/1, Directive 2000/14/EG,	Prepared for transponder:	✓
Travelling gear:	Wheel Ø 200 mm, rubber-tired wheels,	Marking possibility:	On the lid, on the body
Castors:	4 guide rollers, 2 wheel stops or central brake	Extra equipment/ Accessories ² :	lifting grips, DIN-trunnion, foot-pedal lid opener, fork-lift pockets, drawbar, oil-sealed welding (sheet metal)
Lid:	Flat lid, sheet metal and plastic		
Receiver:	Diamond receiver		

Technical Data¹

Type	Content l	Dimension (mm)					Useful load (kg)	Material Body/Lid	Available colours (similar RAL)
		A	B	C	D	E			
DU 660 Plastic	660	1280 max.	850 max.	1290 max.	1250 max.	680 ±5	264	HDPE / HDPE UV-resistant, cadmium-free	Grey (7016), green, brown (8014), blue (5002), yellow (1018), red (2002)
DU 770 Plastic	770	1280 max.	850 max.	1290 max.	1370 max.	680 ±5	308	HDPE / HDPE UV-resistant, cadmium-free	Grey (7016), green, brown (8014), blue (5002), yellow (1018), red (2002)
DU 770 Sheet metal	770	1280 max.	850 max.	1290 max.	1370 max.	680 ±5	308	Sheet metal, galvanized	
DU 1,1 Plastic	1100	1280 max.	1160 max.	1290 max.	1470 max.	680 ±5	440	HDPE / HDPE UV-resistant, cadmium-free	Grey (7016), green, brown (8014), blue (5002), yellow (1018), red (2002)
DU 1,1 Sheet metal	1100	1280 max.	1160 max.	1290 max.	1470 max.	680 ±5	440	Sheet metal, galvanized	
DU 3,3	3300	On request							

¹ In case of all specifications, characteristic properties and/or standard values are involved.
Visuals or technical changes and/or kept improvements we us before.

² Extra equipment, accessories, as well as other colors are available at extra cost and on request.

Ident. No. 3.3.1 · E · Issue 08/2007 · 08/2007 – 1.000

